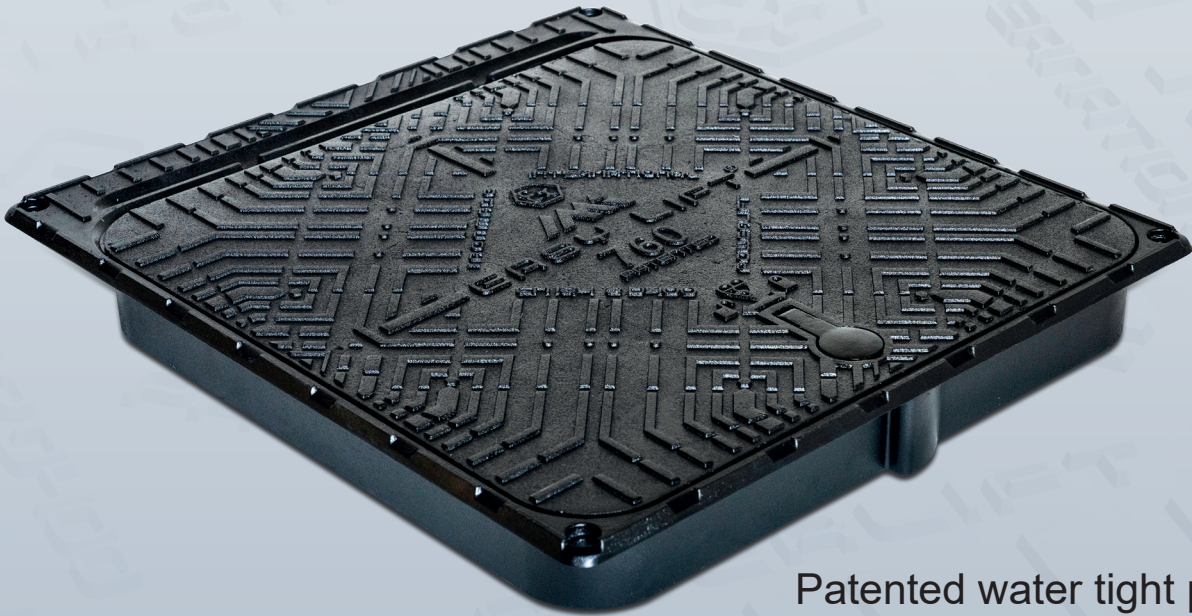


# EASY LIFT<sup>®</sup> 760 ATEX



Patented water tight power lift manhole cover



OPENING 60°



OPENING 100°



IRONMADE INTERNATIONAL srl



# EASY LIFT® 760 ATEX

CLASS D400 - EN 124-2: 2015, IN COMPLIANCE TO  
ATEX 2014/34/UE

## TECHNICAL DATA

### DIMENSIONS

CLEAR OPENING 850 x 930 mm

OVER BASE 850 x 930 mm mm

FRAME HEIGHT 100 mm

TOTAL WEIGHT 104 kg

STANDARD INSTALLATION: rised 15 mm



**Frame** equipped with 4 ramps to facilitate the passage of vehicles (it can also be concreted at the roadside)

**Innovative patented power lift system:** a concealed hinge, independent of the cover, is linked to the frame axis and loaded by means of two clamps which pre-tension the torsion springs housed on the rotation shaft.

This device allows servo-assistance of the lid up to a rotation of 60°. To fully open the lid, to 100° as required by EN 124-2: 2015 standards, simply apply light pressure on the upper edge.

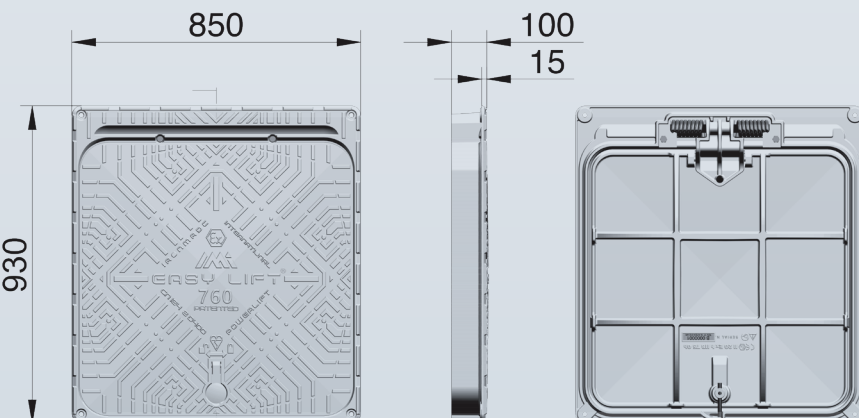
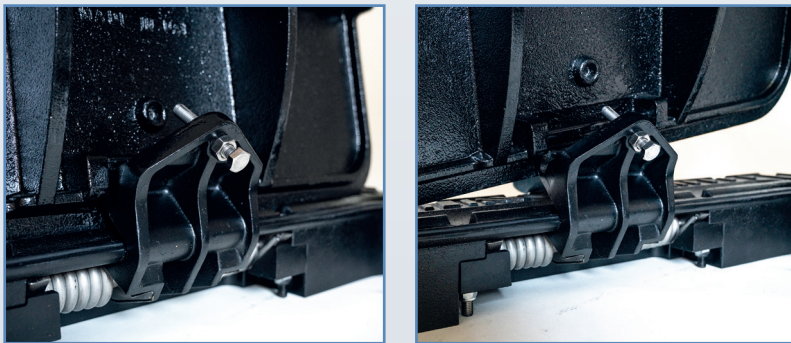
The maximum opening maneuver is not essential as once opened to 60° the lid remains in the position.

**Easy removal lid:** with a lid opening at approximately 80° it can be easily detached from the concealed hinge.

This operation is useful during installation. In fact, the frame complete with power lift system, have total weight of 35 kg, so it is easy to move for positioning and cementing.

Appropriate slots are provided at the four corners of the frame to allow attachment to the slab using tie rods.

**Watertightness guaranteed** by a tubular gasket in petrol-proof material housed in a suitable seat in the frame.



Via San Colombano, 63  
26900 Lodi - Italy  
T+F +39 0371 1920054

[www.ironmadeinternational.it](http://www.ironmadeinternational.it)  
[info@ironmadeinternational.it](mailto:info@ironmadeinternational.it)

